



Marine | 655



Sapphire | 662



Topaz | 671



Jade | 656



Sage | 669



Taupe | 670



Ruby | 660



Graphite | 663



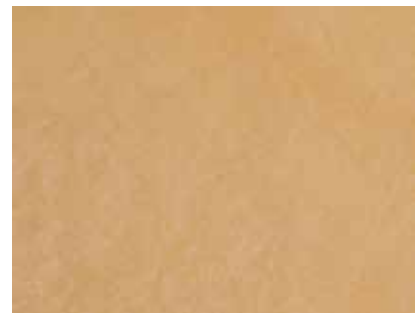
Silver | 661



Sunset | 657



Café | 658



Bamboo | 664

Not shown but also available in Pearl | 667



CAUTION:

Color will vary between products and sheens. This chart is for reference only. Please request an actual color sample or apply sample on site before beginning any project.



Recommended EC-12 Epoxy Primer Colors for Liquid Dazzle

LIQUID DAZZLE COLOR	FIRST CHOICE PRIMER COLOR	SECOND CHOICE PRIMER COLOR
Bamboo	00 - White	27 - Deep Tan
Café	34 - Tile Red	27 - Deep Tan
Graphite	12 - Pewter Gray	42 - Stone Gray
Jade	27 - Deep Tan	n/a
Marine	42 - Stone Gray	n/a
Pearl	00 - White	n/a
Ruby	34 - Tile Red	n/a
Sage	00 - White	40 - Travatan
Sapphire	42 - Stone Gray	n/a
Silver	41 - Cape Cod Gray	42 - Stone Gray
Sunset	27 - Deep Tan	n/a
Taupe	00 - White	n/a
Topaz	00 - White	n/a

- Color will vary. This chart is for reference only. Please apply sample on site before beginning any project.
- Please contact your distributor or a Westcoat representative for detailed Liquid Dazzle instructions.
- Due to the transparency of the EC-38, the primer must be pigmented. For best results, choose a primer similar in color to the EC-38 color being used. Choosing a lighter or darker primer may affect the final look.

